

DESCRIPTION OF
 “The Yale Blues”

By CECIL H. TAYLOR

A dance to Blues rhythm, invented by Cecil H. Taylor, President of the Imperial Society of Teachers of Dancing, and demonstrated in London on 24th July, 1927. The dance having been selected for public performance, was again demonstrated at the Park Lane Hotel, London, on Monday 25th July, 1927.

The following is the description as demonstrated:

Forward Step:- Gentlemen R. F. forward (S) L. F. forward (S) open chasse to right side (QQ) Close L. F. to R. F. (S) and brush through. (S)

1st Side Step:- Open chasse to side (QQ) Step on L. F. and bend knee (S) Bend right knee regaining direction for another movement. (S)

2nd Side Step:- Side Walk L. F. (S) Side Walk R. F. (S) followed by L. R. (QQ) Step on L. and bend knee (S) Bend right knee and regain line of dance.

Outside Tilt:- Step outside of partner L. F. (S) R. F. (S) Swing L. F. forward with slight rise on R. F. (Q) Pass L. F. behind right (Q) step to right with R. F. (Q) Bring L. F. to right and brush through. (S)

Reverse Cross Turn:- L. F. forward $\frac{1}{4}$ reverse turn (Q) Step back on R. F. $\frac{1}{4}$ turn (Q) draw L. F. over R. F. (S) Step back on R. F. (Q) Balance forward (Q) Balance backwards making $\frac{1}{4}$ turn (S) Bring L. F. to side of R. F. and make $\frac{1}{4}$ turn on right heel (S) step to side with L. F. (S) Step back with R. F. (Q) close L. F. to R. F. (Q) changing feet with slight spring, the R. F. taking long step forward. (S)

Tempo, 34 bars per minute. Time, common. (S) represents two beats. (Q) represents one beat. R. F. (right foot) L. F. (left foot) Walking steps should be dragged. Side movements performed with a slight sway from knees.

S denotes a slow step, Q a quick step and QQ two quick steps coming together.

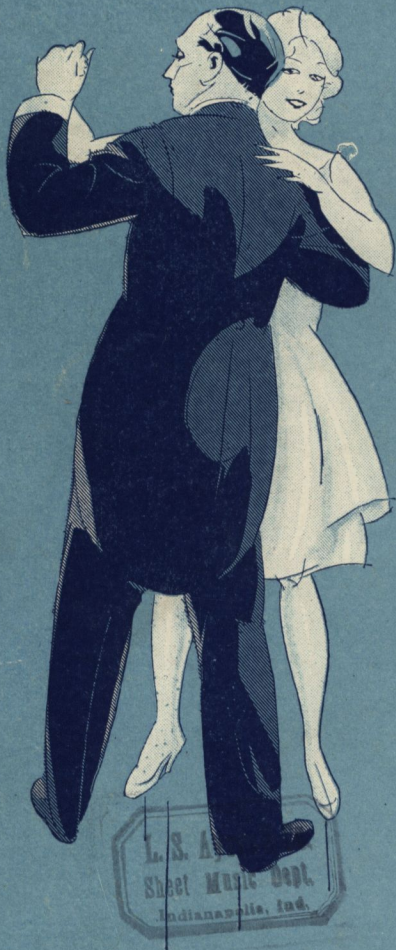
Betty Fathauer
The Original

YALE BLUES

(containing a full description of
how to dance the Yale Blues)

BY
CECIL H. TAYLOR

WRITTEN BY
COLLIE KNOX
COMPOSED BY
VIVIAN ELLIS



I received the copy of the "YALE BLUES," and I consider it very good indeed and the rhythm absolutely perfect for the new Yale Dance invented by me—
Cecil H. Taylor.

Copyright by
FRANCIS, DAY & HUNTER, Ltd., London, Eng.
Published in America by
LEO. FEIST, INC.
Feist Bldg., New York.

*Authorized for Sale And Distribution in the
Countries of North America But Not Elsewhere!*

L.S. A.
Sheet Music Dept.
Indianapolis, Ind.

The Yale Blues

Written by
COLLIE KNOX

FOX-TROT SONG

(Ukulele arr. see note below *)

Composed by
VIVIAN ELLIS

Not too fast

ff

Ukulele chord diagrams: $\begin{matrix} \text{A} \\ \text{C} \\ \text{E} \\ \text{G} \end{matrix}$, $\begin{matrix} \text{A} \\ \text{C} \\ \text{E} \\ \text{G} \end{matrix}$, $\begin{matrix} \text{A} \\ \text{C} \\ \text{E} \\ \text{G} \end{matrix}$, $\begin{matrix} \text{A} \\ \text{C} \\ \text{E} \\ \text{G} \end{matrix}$

A boy once went to Col - lege
He taught it to the mas - ters,

Ukulele chord diagrams: $\begin{matrix} \text{A} \\ \text{C} \\ \text{E} \\ \text{G} \end{matrix}$, $\begin{matrix} \text{A} \\ \text{C} \\ \text{E} \\ \text{G} \end{matrix}$, $\begin{matrix} \text{A} \\ \text{C} \\ \text{E} \\ \text{G} \end{matrix}$, $\begin{matrix} \text{A} \\ \text{C} \\ \text{E} \\ \text{G} \end{matrix}$

And stud - ied "Blues" all day, —
He taught it ev - 'ry where, —

Not quite the sort of know - ledge,
And ev - en wor - thy pas - tors,

Ukulele chord diagrams: $\begin{matrix} \text{A} \\ \text{C} \\ \text{E} \\ \text{G} \end{matrix}$, $\begin{matrix} \text{A} \\ \text{C} \\ \text{E} \\ \text{G} \end{matrix}$, $\begin{matrix} \text{A} \\ \text{C} \\ \text{E} \\ \text{G} \end{matrix}$, $\begin{matrix} \text{A} \\ \text{C} \\ \text{E} \\ \text{G} \end{matrix}$

For which good fa - thers pay. —
Remarked "Well, I de - clare!"

They tried to stop him danc - - ing,
"This dance is might - y nov - - el,

Ukulele chord diagrams: $\begin{matrix} \text{A} \\ \text{C} \\ \text{E} \\ \text{G} \end{matrix}$, $\begin{matrix} \text{A} \\ \text{C} \\ \text{E} \\ \text{G} \end{matrix}$, $\begin{matrix} \text{A} \\ \text{C} \\ \text{E} \\ \text{G} \end{matrix}$, $\begin{matrix} \text{A} \\ \text{C} \\ \text{E} \\ \text{G} \end{matrix}$

But all without a - vail, — He found a Blues en - tranc - ing, The blues he called "The Yale." —
 Let's teach it far and wide, — To ev - 'ry home and hov - el, To ev - 'ry girl and bride." —

CHORUS

They say the Yale — is like the walk — of an - y snail — upon a stalk; — Those are the

views — of all who do the New Yale Blues. Just close your eyes, — you'll do it

soon, — A world of sighs — is in the tune. — When daylight dies, — The stars are dancing

6046-4

**GOOD OLD
TIMERS'**

A FOLIO CONTAINING 75 OF THE GOOD OLD SONGS AND CHORUSES WE ALL LOVE — SUCH AS "IN THE GOOD OLD SUMMERTIME" — "WHERE DID YOU GET THAT HAT?" — "MANDY LEE" — "SIDEWALKS OF NEW YORK" — "COMRADES" — "LITTLE ANNIE ROONEY" — "SAY AU REVOIR, BUT NOT GOODBYE," ETC., ETC.
 A SONG FOLIO, A DANCE FOLIO, A UKULELE FOLIO. — ALL THREE IN THIS BIG BOOK FOR 50¢ FROM YOUR DEALER, OR DIRECT!
BE SURE TO GET IT — YOU'LL NOT REGRET IT!

Those Yale Blues. When Harvard knew— That syn-co-pa - tion, It sent them sim-ply

wild. Their anger grew— When ev-'ry na - tion, And ev-'ry lit - tle child, Said that the

optional

Yale— had put the rest, — Beyond the pale — it is the best. — Put on your

shoes, — Suppose you try those New Yale Blues. They say the Blues. —